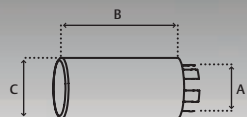




For the perfect ending

Stainless steel

Tajco®

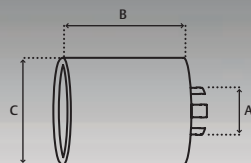


420000 Bright Chrome EAN: 5701207 142009
420200 Alu-look Chrome EAN: 5701207 142023
A: Min/max 30/54 mm B: 140 mm C: Ø70 mm

Profile: Round Perforated



STAINLESS STEEL

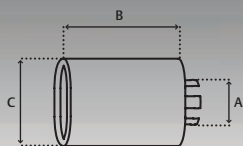


420400 Bright Chrome EAN: 5701207 142047
420600 Alu-look Chrome EAN: 5701207 142061
A: Min/max 30/54 mm B: 140 mm C: 64x117 mm

Profile: Ellipsis



STAINLESS STEEL

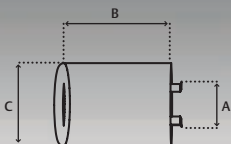


4208000 Bright Chrome EAN: 5701207 142085
4210000 Alu-look Chrome EAN: 5701207 142108
 A: Min/max 30/54 mm B: 140 mm C: 68x101 mm

Profile: Oval



STAINLESS STEEL



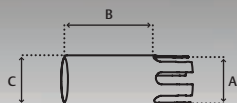
4292000 Bright Chrome EAN: 5701207 142924
4294000 Alu-look Chrome EAN: 5701207 142948
 A: Min/max 41/58 mm B: 150 mm C: 72x95 mm

Profile: Oval



STAINLESS STEEL

Tajico®

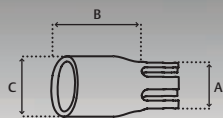


4296000 Bright Chrome EAN: 5701207 142962
4298000 Alu-look Chrome EAN: 5701207 142986
 A: Min/max 30/50 mm B: 130 mm C: Ø57 mm

Profile: Round



STAINLESS STEEL

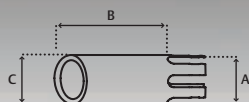


4300000 Bright Chrome EAN: 5701207 143006
4302000 Alu-look Chrome EAN: 5701207 143020
 A: Min/max 30/50 mm B: 145 mm C: 57x70 mm

Profile: Ellipsis



STAINLESS STEEL



4304000 Bright Chrome EAN: 5701207 143044

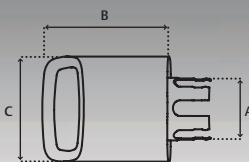
4306000 Alu-look Chrome EAN: 5701207 143068

A: Min/max 30/50 mm B: 170 mm C: Ø57 mm

Profile: Oval



STAINLESS STEEL



4212000 Bright Chrome EAN: 5701207 142122

4214000 Alu-look Chrome EAN: 5701207 142146

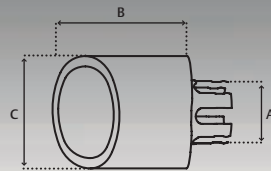
A: Min/max 55/66 mm B: 215 mm C: 82x114 mm

Profile: Square



STAINLESS STEEL

Tajico®

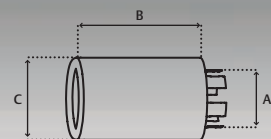


4216000 Bright Chrome EAN: 5701207 142160
4218000 Alu-look Chrome EAN: 5701207 142184
 A: Min/max 55/66 mm B: 215 mm C: 86x119 mm

Profile: Oval



STAINLESS STEEL

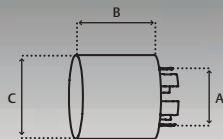


4220000 Bright Chrome EAN: 5701207 142207
4222000 Alu-look Chrome EAN: 5701207 142221
 A: Min/max 55/66 mm B: 180 mm C: \varnothing 95 mm

Profile: Round



STAINLESS STEEL

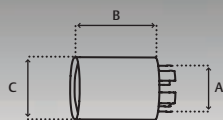


4224000 Bright Chrome EAN: 5701207 142245
4226000 Alu-look Chrome EAN: 5701207 142269
 A: Min/max 55/66 mm B: 125 mm C: Ø95 mm

Profile: Round



STAINLESS STEEL



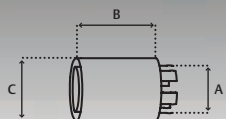
4228000 Bright Chrome EAN: 5701207 142283
4230000 Alu-look Chrome EAN: 5701207 142306
 A: Min/max 30/54 mm B: 125 mm C: Ø72 mm

Profile: Round



STAINLESS STEEL

Tajico®

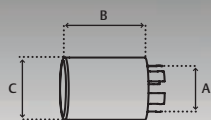


4232000 Bright Chrome EAN: 5701207 142320
4234000 Alu-look Chrome EAN: 5701207 142344
A: Min/max 30/54 mm B: 125 mm C: Ø72 mm

Profile: Round



STAINLESS STEEL

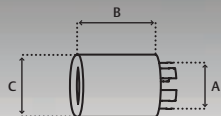


4236000 Bright Chrome EAN: 5701207 142368
4238000 Alu-look Chrome EAN: 5701207 142382
A: Min/max 30/54 mm B: 125 mm C: Ø72 mm

Profile: Round



STAINLESS STEEL



4240000 Bright Chrome EAN: 5701207 142405

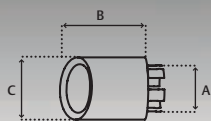
4242000 Alu-look Chrome EAN: 5701207 142429

A: Min/max 30/54 mm B: 125 mm C: \varnothing 72 mm

Profile: Round



STAINLESS STEEL



4244000 Bright Chrome EAN: 5701207 142443

4246000 Alu-look Chrome EAN: 5701207 142467

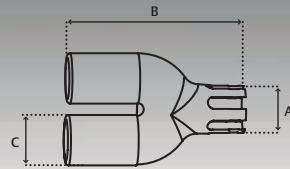
A: Min/max 30/54 mm B: 125 mm C: \varnothing 72 mm

Profile: Round



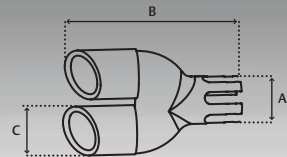
STAINLESS STEEL

Tajico®



4248000 Bright Chrome EAN: 5701207 142481
4250000 Alu-look Chrome EAN: 5701207 142504
 A: Min/max 30/54 mm B: 202 mm C: Ø57 mm

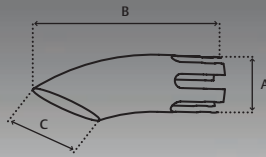
Profile: Round Twin



4252000 Bright Chrome EAN: 5701207 142528
4254000 Alu-look Chrome EAN: 5701207 142542
 A: Min/max 30/54 mm B: 202 mm C: Ø57 mm

Profile: Round





4256000 Bright Chrome EAN: 5701207 142566
4262000 Alu-look Chrome EAN: 5701207 142627
 A: Min/max 24/48 mm B: 160 mm C: Ø50 mm

4258000 Bright Chrome EAN: 5701207 142580
4264000 Alu-look Chrome EAN: 5701207 142641
 A: Min/max 30/54 mm B: 160 mm C: Ø57 mm

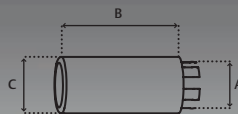
4260000 Bright Chrome EAN: 5701207 142603
4266000 Alu-look Chrome EAN: 5701207 142665
 A: Min/max 37/61 mm B: 160 mm C: Ø63 mm

Profile: Round - Diesel pipe



STAINLESS STEEL

Tajico®



4268000 Bright Chrome EAN: 5701207 142689
4276000 Alu-look Chrome EAN: 5701207 142764
 A: Min/max 30/54 mm B: 140 mm C: Ø65 mm

4270000 Bright Chrome EAN: 5701207 142702
4278000 Alu-look Chrome EAN: 5701207 142788
 A: Min/max 30/54 mm B: 140 mm C: Ø72 mm

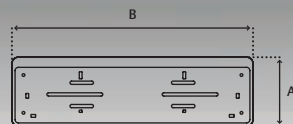
4272000 Bright Chrome EAN: 5701207 142726
4280000 Alu-look Chrome EAN: 5701207 142801
 A: Min/max 55/66 mm B: 140 mm C: Ø80 mm

4274000 Bright Chrome EAN: 5701207 142740
4282000 Alu-look Chrome EAN: 5701207 142825
 A: Min/max 55/66 mm B: 140 mm C: Ø85 mm

Profile: Round



STAINLESS STEEL



Numberplate frame EU (Germany)

4284000 Bright Chrome EAN: 5701207 142849

4286000 Alu-look Chrome EAN: 5701207 142863

A: 141 mm B: 533 mm

Numberplate frame Denmark

4288000 Bright Chrome EAN: 5701207 142887

4290000 Alu-look Chrome EAN: 5701207 142900

A: 148 mm B: 517 mm



Tajco®

Tajco A/S
Odinsvej 1 · DK 7200 Grindsted · Denmark
Phone: +45 75 32 14 11 · Fax: +45 75 32 40 89
info@tajco.dk · www.tajco.dk